



COMPONENTES



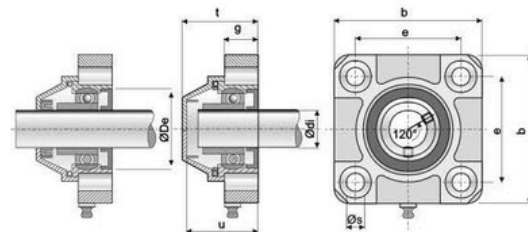
SurTécnica

SISTEMAS TRANSPORTADORES

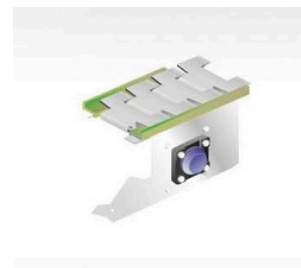
CAJA PORTA RODAMIENTOS - SQUARE SUPPORT

C.P.R. 4 Agujeros Serie UCF

Bearing Support Series UCF With 4 Holes

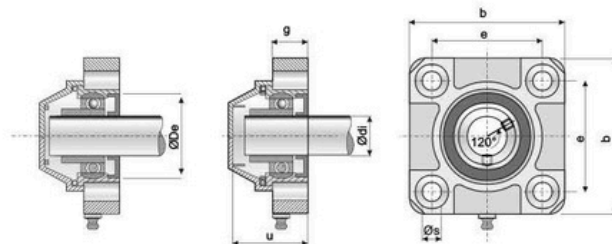


PIEZA	DESCRIP.	PESO	ØDI	ØDE	MATERIALES	ØS	E	B	G	U	T
CERRADAS: 083 068 069 133 134 ABIERTAS: 1258 1259 1260 1261 1262	4 AGUJ	410g 398g 577g 882g 968g	20 25 30 35 40	52 52 62 80 80	CAJA=PAFG ENGRASADOR=BP B ARANDELA=AISI 304 RODAMIENTO= FE/AISI 309	11	71 84 92	98 110 118	22.2 26	48 ,5 54 ,5 51, 5	50, 2 58, 5 55, 6



C.P.R. 4 Agujeros E/C 84mm

Bearing Support With 4 Holes 84mm

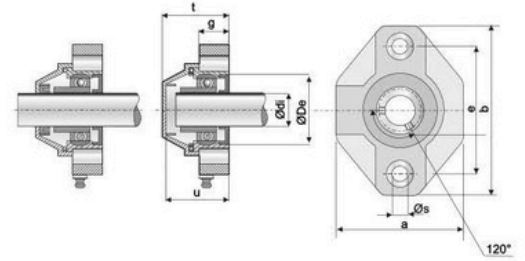


PIEZA	DESCRIP.	PESO	ØDI	ØDE	MATERIALES	ØS	E	B	G
CERRADAS: 1860 1862 1864 ABIERTAS: 1861 1863 1865	4 AGUJ.	752g 814g 925g	30 35 40 40	80	CAJA=PAFG ENGRASADOR=BPB ARANDELA=AISI 304 RODAMIENTO= FE/AISI 309	10.2	83.5	110.5	25.3

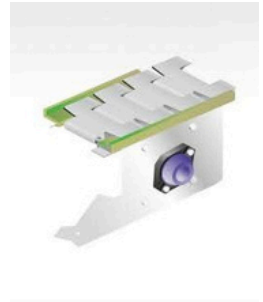


CAJA PORTA RODAMIENTOS - SQUARE SUPPORT

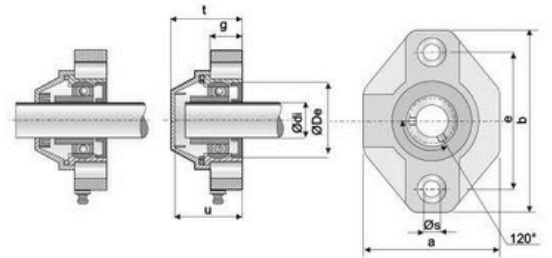
C.P.R. 2 Agujeros Serie UCF E/C 117
Bearing Support Series UCF With 2 Holes E/C 117



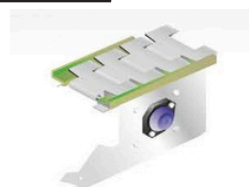
PIEZA	DESCRIP.	PESO	ØDI	ØDE	MATERIALES	A	E	B	G	U	T
CERRADAS: 287 198 199 ABIERTAS: 1267 1268 1269	2 AGUJ	920g 648g 794g	30 35 40	80	CAJA=PAFG ENGRASADOR=BP B ARANDELA=AISI 304 RODAMIENTO= FE/AISI 309	116,5	117	153	24,8	60	62,5



C.P.R. 2 Agujeros Serie UCF E/C 99 84mm
Bearing Support Series UCF With 2 Holes E/C 99

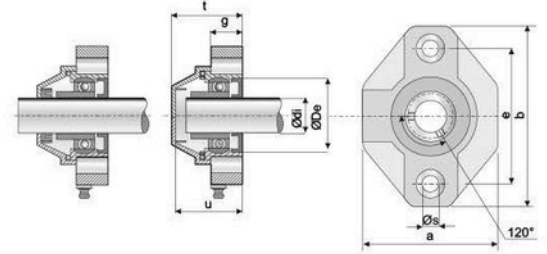


PIEZA	DESCRIP.	PESO	ØDI	ØDE	MATERIALES	ØS	A	E	B	G	U	T
CERRADAS: 196 197 ABIERTAS: 1265 1266	2 AGUJ.	458g 524g	25 30	65,5	CAJA=PAFG ENGRASADOR=BPB ARANDELA=AISI 304 RODAMIENTO= FE/AISI 309	11	98	99	131	25,5	52,5	56,5

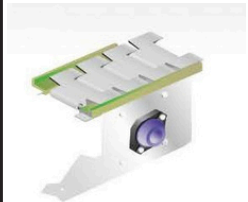


CAJA PORTA RODAMIENTOS - SQUARE SUPPORT

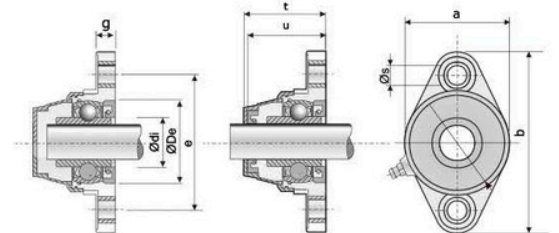
C.P.R. 2 Agujeros Serie UCF E/C 90
Bearing Support Series UCF With 2 Holes E/C 90



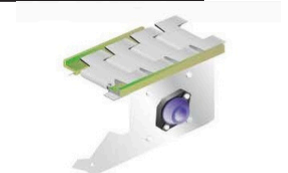
PIEZA	DESCRIP.	PESO	ØDI	ØDE	MATERIALES	ØS	A	E	B	G	U	T
CERRADAS: 140 141 ABIERTAS: 1263 1264	2 AGUJ.	382g 437g	20 25	52	CAJA=PAFG ENGRASADOR=BPB ARANDELA=AISI 304 RODAMIENTO= FE/AISI 309	11	90	90	120	23	46,5	50,5



C.P.R. 2 Agujeros Serie UCF E/C 76,5
Bearing Support Series UCF With 2 Holes E/C 76,5

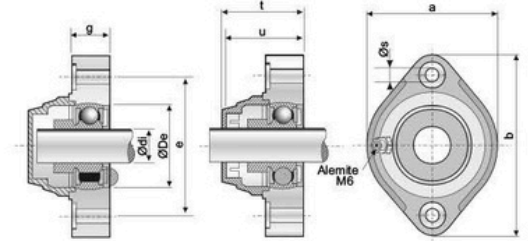


PIEZA	DESCRIP.	PESO	ØDI	ØDE	MATERIALES	ØS	E	B	G	U	T
CERRADAS: 214 215 216 217 ABIERTAS: 1320 1321 1322 1323	2 AGUJ.	286g 328g 434g 356g	12 15 17 20	47	CAJA=PAFG ENGRASADOR=BPB ARANDELA=AISI 304 RODAMIENTO= FE/AISI 309	11	76.5	103	11	46	48



CAJA PORTA RODAMIENTOS - SQUARE SUPPORT

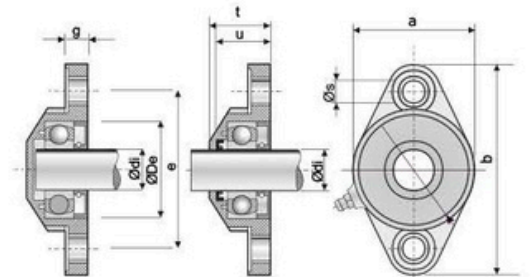
C.P.R. 2 Agujeros Serie UCF E/C 63,5
Bearing Support Series UCF With 2 Holes E/C 63,5



PIEZA	DESCRIP.	PESO	ØDI	ØDE	MATERIALES	ØS	A	E	B	G	U	T
CERRADAS: 211 212 213 ABIERTAS: 1324 1325 1326	2 AGUJ.	97g 108g 126g	12 15 17	40	CAJA=PAFG ENGRASADOR=BP B ARANDELA=AISI 304 RODAMIENTO= FE/AISI 309	6,5	60	63,5	83	15,7	35	37



CPR 2 Agujeros Serie F 6204
E/C 76,5 mm
Bearing Support Series F 6204
With 2 Holes E/C 76,5

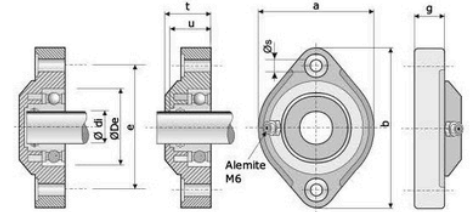


PIEZA	DESCRIP.	PESO	ØDI	ØDE	MATERIALES	ØS	E	B	G	U	T
CERRADAS: 221 ABIERTAS: 219	2 AGUJ.	153g	20	47	CAJA=PAFG ENGRASADOR=BPB ARANDELA=AISI 304 RODAMIENTO= FE/AISI 309	11	76,5	103	11	26	28

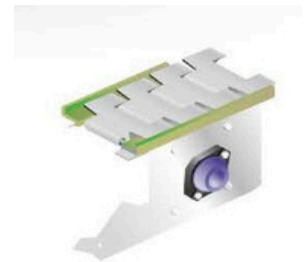


CAJA PORTA RODAMIENTOS - SQUARE SUPPORT

C.P.R. 2 Agujeros Serie F 6293 E/C 63,5
 Bearing Support Series F 6203 With 2
 Holes E/C 63,5mm



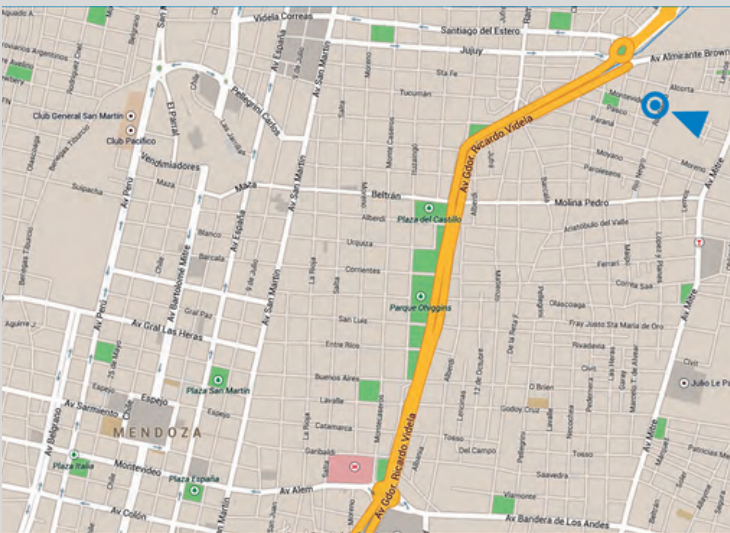
PIEZA	DESCRIP.	PESO	ØDI	ØDE	MATERIALES	ØS	A	E	B	G	U	T
CERRADAS: 209 ABIERTAS: 210	2 AGUJ.	89g	17	40	CAJA=PAFG ENGRASADOR=BPB ARANDELA=AISI 304 RODAMIENTO= FE/AISI 309	6,5	60	63,5	83	17,5	18,5	24





DONDE ESTAMOS

**MONTEVIDEO 561
GUAYMALLÉN (5519).
MENDOZA. ARGENTINA**



CONTÁCTANOS

+54 9 261 3878497

www.surtecnica.ar

infocomercial@surtecnica.com

[surtecnica](https://www.instagram.com/surtecnica)

